

The Power of a Plan

The Power of Partners



Ken Arney

Deputy Regional Forester

North American Wildlife and Natural Resources Conference

March 19, 2009



Welcome!

- ▷ Unveiling of First Ever Range-Wide **Plan** for Longleaf
- ▷ Introduction to America's Longleaf and its Special **Partners**





Why a Plan for Longleaf?





The Conservation Plan

- ▷ The **VISION** for the Plan is to have...
 - functional, viable longleaf pine ecosystems
 - with the full spectrum of ecological, economic and social values
 - inspired through a voluntary partnership of concerned, motivated organizations and individuals.





The Conservation Plan

- ▷ Calls for strategic coordination of science-based conservation
- ▷ Spans complex and interconnected programs, policies, actions and research
- ▷ Calls for actions from local to national level





The Conservation Plan

- ▶ Provides a “road map” for collective efforts range-wide
- ▶ Establishes a goal: 8 million acres over 15 years (up from 3.4 million acres)
- ▶ Identifies “Significant Geographic Areas” for special attention
- ▶ Establishes 6 overarching Strategies and 3 Cross Cutting Approaches
- ▶ Identifies Objectives and 88 Key Actions to support the Strategies and Approaches






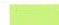
Achieving the 8 Million Acre Goal

- ▷ **Maintaining** existing longleaf ecosystems in good condition
- ▷ **Improving** acres classified as “longleaf forest types” and with longleaf trees present, but missing significant components of understory communities and fire regimes
- ▷ **Restoring** longleaf pine forests to suitable sites currently in other forest types or land classifications




SIGNIFICANT LANDSCAPES FOR LONGLEAF PINE CONSERVATION



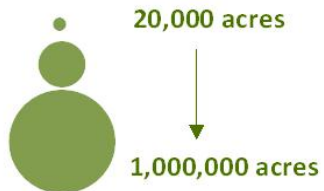
Key

-  Longleaf Pine Historic Range
-  Federally Managed Lands

Longleaf Pine Acreage by County (FIA)

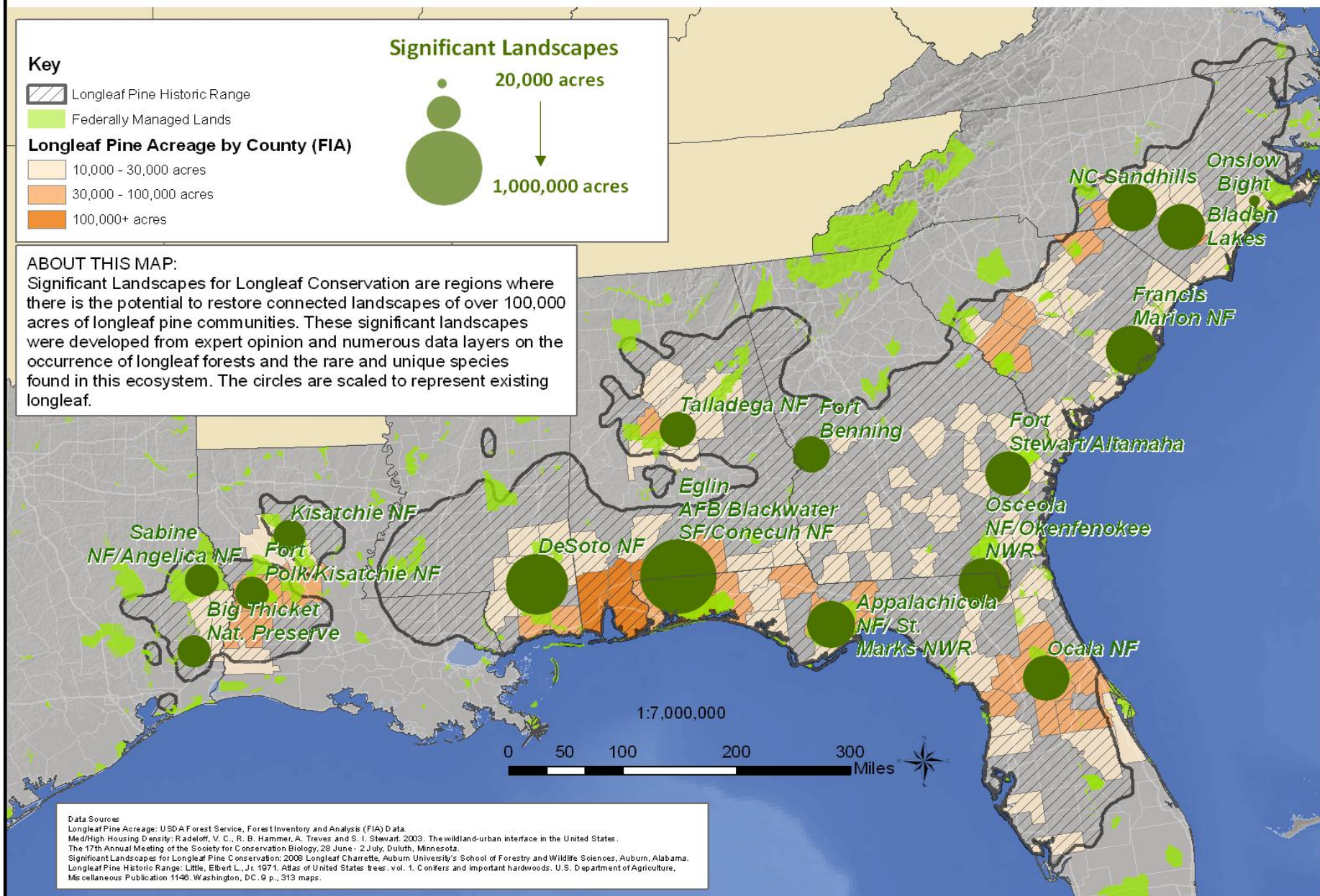
-  10,000 - 30,000 acres
-  30,000 - 100,000 acres
-  100,000+ acres

Significant Landscapes



ABOUT THIS MAP:

Significant Landscapes for Longleaf Conservation are regions where there is the potential to restore connected landscapes of over 100,000 acres of longleaf pine communities. These significant landscapes were developed from expert opinion and numerous data layers on the occurrence of longleaf forests and the rare and unique species found in this ecosystem. The circles are scaled to represent existing longleaf.



Data Sources

Longleaf Pine Acreage: USDA Forest Service, Forest Inventory and Analysis (FIA) Data.
 Med/High Housing Density: Radloff, V. C., R. B. Hammer, A. Treves and S. I. Stewart. 2003. The wildland-urban interface in the United States. The 17th Annual Meeting of the Society for Conservation Biology, 28 June - 2 July, Duluth, Minnesota.
 Significant Landscapes for Longleaf Pine Conservation: 2008 Longleaf Charrette, Auburn University's School of Forestry and Wildlife Sciences, Auburn, Alabama.
 Longleaf Pine Historic Range: Little, Elbert L., Jr. 1971. Atlas of United States trees, vol. 1. Conifers and important hardwoods. U.S. Department of Agriculture, Miscellaneous Publication 1146. Washington, DC. 9 p., 313 maps.



Six Overarching Strategies

1. Public Lands
2. Private Lands
3. Economic and Market-based
4. Fire Management
5. Understory and Overstory
6. Climate Change





Three Key Action Examples

▷ Fire Management Strategy

- Address smoke management to increase prescribed burning while complying with state air quality laws, and engage in Smoke Management Plan updates in each state.

▷ Understory and Overstory Strategy

- Dramatically increase seedling production and capacity in the public and private sectors (nursery management, seed collection/processing and developing new technologies).

▷ Climate Change Strategy

- Promote and demonstrate the role of longleaf in conservation planning to increase resilience and resistance of forests, and link with other climate efforts.



The Power of Partners

American Forest Foundation

Cooperative Extension Service Southern Region

Department of Defense

East Gulf Coastal Plain Joint Venture

Environmental Defense Fund

Environmental Protection Agency

Jones Ecological Research Center

Longleaf Alliance

National Wild Turkey Federation

National Wildlife Federation

NatureServe

Southeastern Association of
Fish and Wildlife Agencies

SERPPAS

Southern Environmental Law Center

Southern Group of State Foresters

The Conservation Fund

The Nature Conservancy

U.S. Fish and Wildlife Service

USDA Forest Service

USDA Natural Resources Conservation Service

U.S. Geological Survey

Wildlife Mississippi



The Power of Partners

- Build on Past Efforts
 - Longleaf Alliance
 - Forest Service Research
 - US Fish and Wildlife Service
 - States
 - National Fish and Wildlife Foundation
 - NRCS and FSA



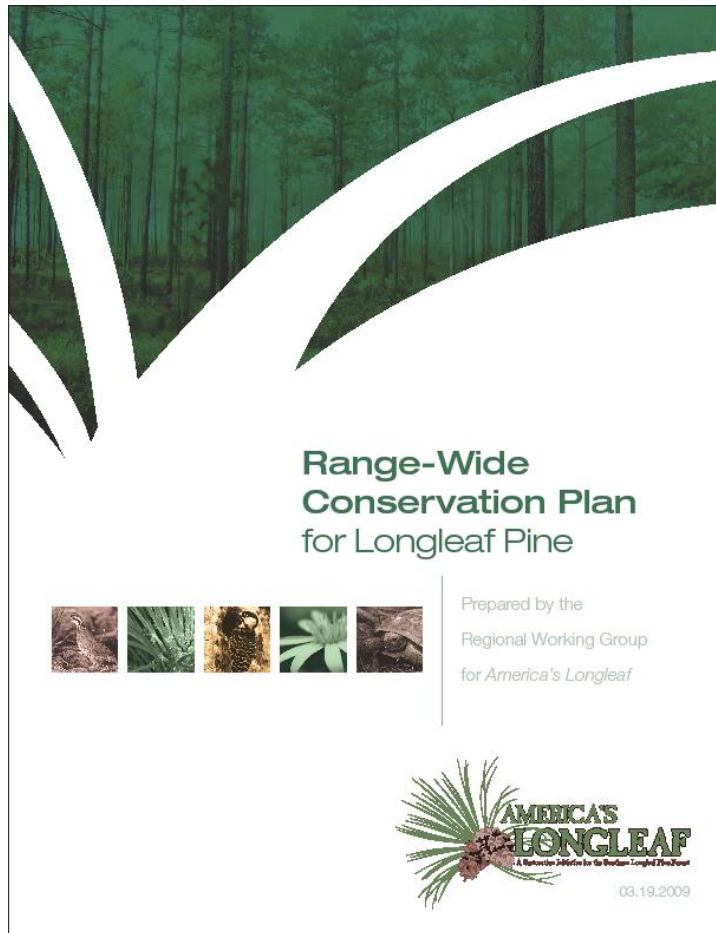
The Power of Partners

- Build on Past Efforts
- Invest in Planning / A Plan





The Power of Partners The Power of a Plan



Range-Wide Conservation Plan for Longleaf Pine



Prepared by the
Regional Working Group
for America's Longleaf



03.19.2009



A Charrette?





The Power of Partners

The Power of a Plan

- ▷ Build on past efforts
- ▷ Invest in Planning / A Plan
- ▷ Boldly and publicly support implementation





www.americaslongleaf.org

